

CONNECT
better with your customers

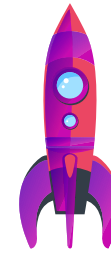
SAVE

BOOST

your business & soar above competitors

WITH STRATEGIC DIGITAL DISPLAYS

COMMERCIAL DISPLAY CATALOGUE 2020



**CUTTING
EDGE
MEDIA**

SMART DIGITAL SIGNAGE SOLUTION

SMART SIGNAGE

03-06

STANDARD BRIGHTNESS SERIES

ASF4317A-GA
ASF5517A-GA
ASU5517A-GA
ASU6517A-GA
AS1117A-GA

HIGH BRIGHTNESS SERIES

ASF5517H-GA

SMART TOUCH SIGNAGE

07-10

MOUNT SERIES

ASF1117A-TA
ASF3217A-TA
ASF4317A-TA
ASF5517A-TA

MOUNT SERIES

ASF3217B-TA
ASF4317B-TA
ASF5517B-TA

SMART SHELF SIGNAGE

11-12

SHELF SERIES

ASF2917A-GA
ASF3717A-GA
ASF1617A-GA

SMART KIOSK SIGNAGE

13-20

KIOSK TOUCH SERIES

ASF4317C-TA
ASF5517C-TA

KIOSK CAPACITIVE TOUCH SERIES

ASF4317D-TA
ASF5517D-TA

KIOSK NON TOUCH SERIES

ASF4317B-GA
ASF5517B-GA
ASU6517B-GA

FOLDABLE NON TOUCH SERIES

ASF4318A-GA

DID DISPLAY

21-22

WALL SERIES

DAF4617A-GA
DAF5517A-GA

SMART INTERACTIVE ELECTRONIC WHITEBOARD

23-24

ELECTRONIC BOARD SERIES

ASU6517A-TB
ASU7517A-TB

SMART OUTDOOR SIGNAGE

27-32

OUTDOOR SERIES

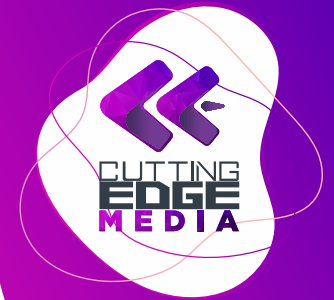
CDX86USA
CDX55USA
CDX65USA

SMART DISPLAY

25-26

HOTEL SERIES

E48FH16A-AU

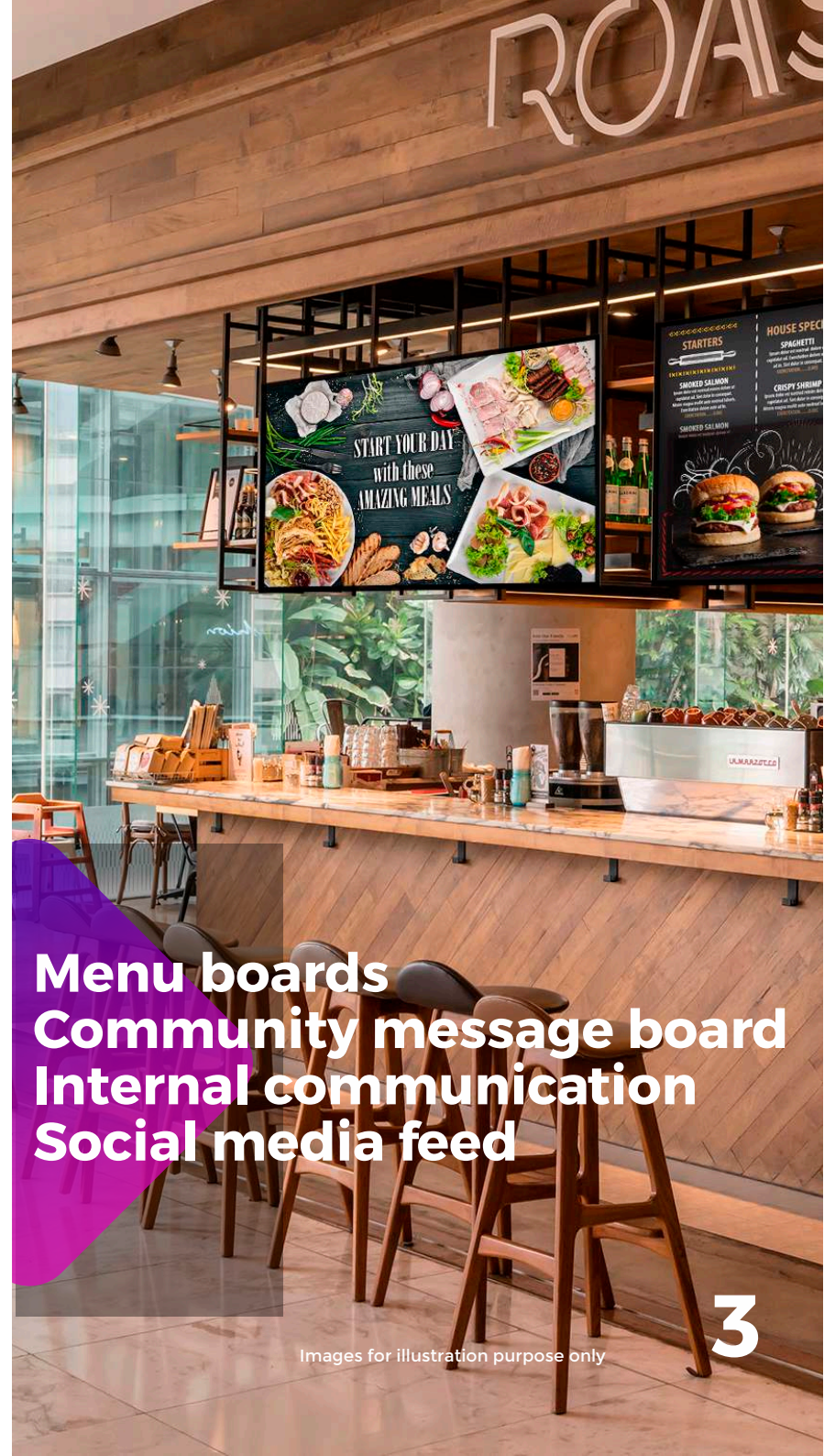




ASF4317A-GA
ASF5517A-GA
ASU5517A-GA
ASU6517A-GA
ASF1117A-GA

SMART SIGNAGE

STANDARD BRIGHTNESS SERIES



Menu boards
Community message board
Internal communication
Social media feed

Images for illustration purpose only

ASF4317A-GA

ASF5517A-GA

ASU5517A-GA

ASU6517A-GA

ASF1117A-GA

SYSTEM	Main IC Model	Hi3751 V600	Hi3751 V600	Hi3751 V600	Hi3751 V600	Hi3751-ARBCV320
	CPU	Quad Core A53 CPU	Quad Core A53 CPU	Quad Core A53 CPU	Quad Core A53 CPU	ARM Cortex - A53 CPU
	GPU	Hexa Core GPU	Hexa Core GPU	Hexa Core GPU	Hexa Core GPU	Hexa Core GPU
	Memory	2GB DDR3	2GB DDR3	2GB DDR3	2GB DDR3	512MB DDR3
	NAND Flash	8GB eMMC Flash	8GB eMMC Flash	8GB eMMC Flash	8GB eMMC Flash	8GB eMMC Flash
	Android Version	Android 5.1	Android 5.1	Android 5.1	Android 5.1	Android 4.4
	Online AD System	Cybercast	Cybercast	Cybercast	Cybercast	Cybercast
	Panel Size	43 inches (109cm) Diagonal	55 inches (140cm) Diagonal	55 inches (140cm) Diagonal	65 inches (165cm) Diagonal	10.6 inches (27cm) Diagonal
	Panel Native Resolution	1920 x 1080 pixels	1920 x 1080 pixels	3840 x 2160 pixels	3840 x 2160 pixels	1920 x 1080 pixels
	Aspect Ratio	16:9	16:9	16:9	16:9	16:9
	Back light	ELED	ELED	ELED	ELED	ELED
	Viewing angle (H/V)	178 / 178 degree	178 / 178 degree	178 / 178 degree	178 / 178 degree	178 / 178 degree
	Brightness	350 cd/m ² (Typ)	500 cd/m ² (Typ)	350 cd/m ² (Typ)	350 cd/m ² (Typ)	350 cd/m ² (Typ)
	Touch Technology	-	-	-	-	-
Touch Inputs	-	-	-	-	-	
Touch Response Speed	-	-	-	-	-	
Working Life	50000 MTBF (7 x 24 hours)	50000 MTBF (7 x 24 hours)	50000 MTBF (7 x 24 hours)	50000 MTBF (7 x 24 hours)	50000 MTBF (7 x 24 hours)	
DESIGN	Screen Protector	-	-	-	-	-
	Sound Output (RMS)	2 x 3 W	2 x 3 W	2 x 5 W	2 x 5 W	1 x 3 W
	Front Colour	Gold / Silver / Black	Gold / Silver / Black	Black	Black	Black
	Frame Material	Aluminum Alloy Anodic Anodization Coloring	Aluminum Alloy Anodic Anodization Coloring	Aluminum Alloy Anodic Anodization Coloring	Aluminum Alloy Anodic Anodization Coloring	High Strength Cold Rolled Plate
	Rear Cover Material	High Strength Cold Rolled Plate	High Strength Cold Rolled Plate	High Strength Cold Rolled Plate	High Strength Cold Rolled Plate	High Strength Cold Rolled Plate
	Standard Base	-	-	-	-	-
	Wall Mount Support	Yes	Yes	Yes	Yes	-
	Anti-theft Lock	Yes	Yes	Yes	Yes	-
	Base Wheel	-	-	-	-	-
	HDMI Out	-	-	-	-	-
INPUT & OUTPUT	HDMI In	1	1	1	1	1
	Component in (Y/PB/Pr)	-	-	-	-	-
	PC in (D-sub)	-	-	-	-	-
	Composite in (AV)	Mini Jack*1	Mini Jack*1	Mini Jack*1	Mini Jack*1	-
	PC Audio In / DVI Audio in (Mini Jack)	-	-	-	-	-
	RF In	Australia only	Australia only	Australia only	Australia only	-
	Line Out	1	1	1	1	-
	IR Out	-	-	-	-	-
	RS232	1	1	1	1	-
	USB 3.0	1	1	1	1	1
	USB 2.0	1	1	1	1	1
	Card Reader	Micro SD*1	Micro SD*1	Micro SD*1	Micro SD*1	-
	Ethernet (LAN)	1	1	1	1	-
	Wireless LAN Built-in	IEEE802.11 b/g/n, 2.4GHz	IEEE802.11 b/g/n, 2.4GHz	IEEE802.11 b/g/n, 2.4GHz	IEEE802.11 b/g/n, 2.4GHz	IEEE802.11 b/g/n, 2.4GHz
FEATURE	Wireless BT Built-in	Optional	Optional	Optional	Optional	Optional
	3G/4G Built-in	Optional	Optional	Optional	Optional	Optional
	Built-in battery	Real-time clock function	Real-time clock function	Real-time clock function	Real-time clock function	Real-time clock function
	Timing switch	Built-in single chip to set Stand by On/Off	Built-in single chip to set Standby On/Off	Built-in single chip to set Standby On/Off	Built-in single chip to set Standby On/Off	Built-in single chip to set Standby On/Off
	Watch Dog	Yes	Yes	Yes	Yes	Yes
	Working temperature	0°C ~ +45°C	0°C ~ +45°C	0°C ~ +45°C	0°C ~ +45°C	0°C ~ +45°C
ELECTRICAL	Working humidity	10% ~ 90%	10% ~ 90%	10% ~ 90%	10% ~ 90%	10% ~ 90%
	Storage temperature	-20°C ~ +60°C	-20°C ~ +60°C	-20°C ~ +60°C	-20°C ~ +60°C	-20°C ~ +60°C

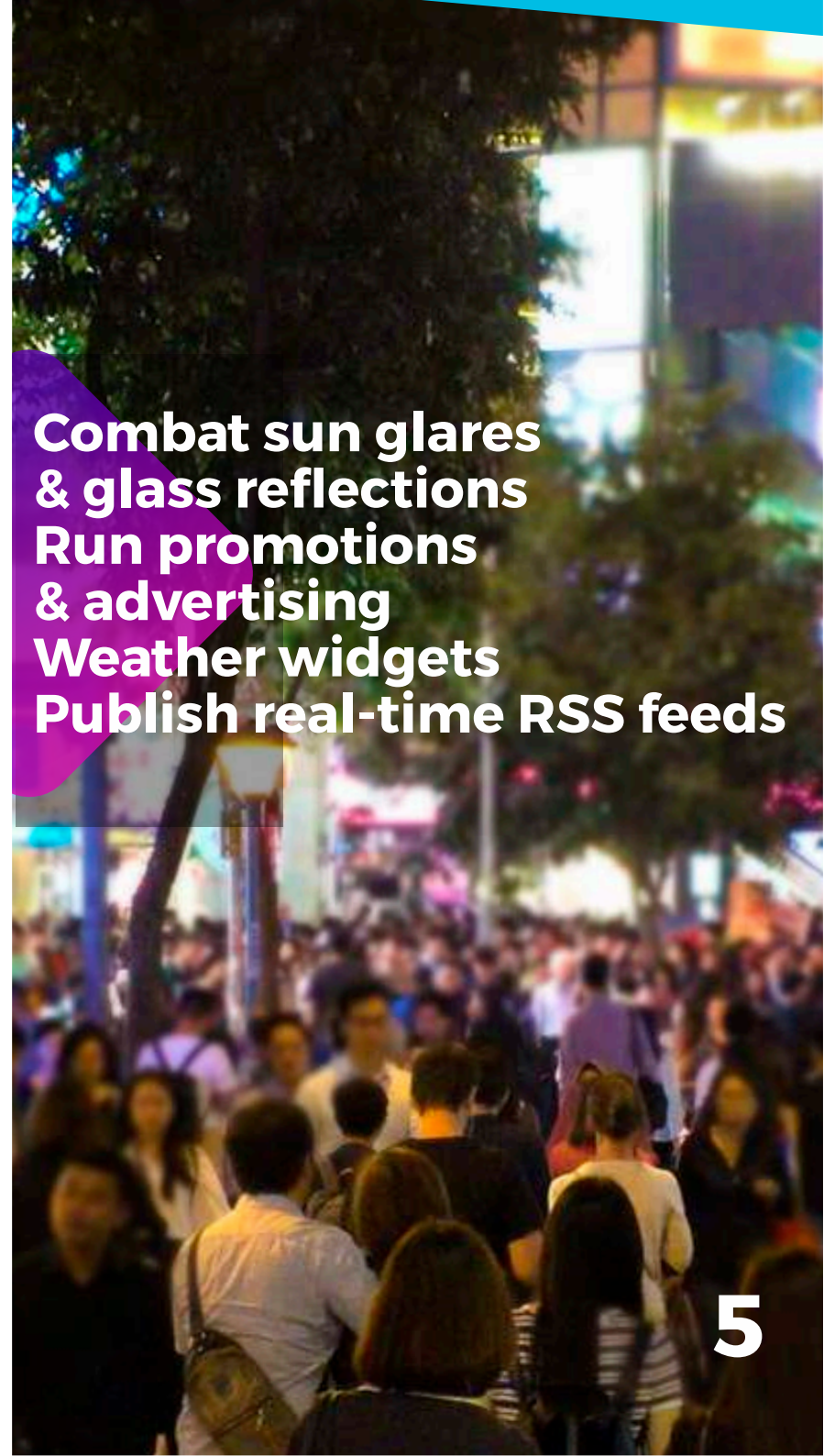


ASF5517H-GA

SMART SIGNAGE

HIGH BRIGHTNESS SERIES

Combat sun glares & glass reflections
Run promotions & advertising
Weather widgets
Publish real-time RSS feeds





Images for illustration purpose only

ASF5517H-GA

SYSTEM	Main IC Model	Hi3751 V600
	CPU	Quad Core A53 CPU
	GPU	Hexa Core GPU
	Memory	2GB DDR3
	NAND Flash	8GB eMMC Flash
	Android Version	Android 5.1
	Online AD System	Cybercast
	Panel Size	55 inches (140cm) Diagonal
	Panel Native Resolution	1920 x 1080 pixels
	Aspect Ratio	16:9
	Back light	DLED
	Viewing angle (H/V)	178 / 178 degree
	Brightness	2500 cd/m ² (Typ)
DESIGN	Touch Technology	-
	Touch Inputs	-
	Touch Response Speed	-
	Working Life	50000 MTBF (7 x 24 hours)
	Screen Protector	-
	Sound Output (RMS)	2 x 3 W
	Front Colour	Silver / Black
	Frame Material	High Strength Cold Rolled Plate
	Rear Cover Material	High Strength Cold Rolled Plate
	Standard Base	-
	Wall Mount Support	Yes
	Anti-theft Lock	Yes
	INPUT & OUTPUT	Base Wheel
HDMI Out		-
HDMI In		1
Component in (Y/PB/Pr)		-
PC in (D-sub)		-
Composite in (AV)		Mini Jack*1
PC Audio In / DVI Audio in (Mini Jack)		-
RF In		Australia only
Line Out		1
IR Out		-
RS232		1
USB 3.0		1
USB 2.0		1
FEATURE	Card Reader	Micro SD*1
	Ethernet (LAN)	1
	Wireless LAN Built-in	IEEE802.11 b/g/n, 2.4GHz
	Wireless BT Built-in	Optional
	3G/4G Built-in	Optional
	Built-in battery	Real-time clock function
	Timing switch	Built-in single chip to set Standby On/Off
ELECTRICAL	Watch Dog	Yes
	Working temperature	0°C ~ +45°C
	Working humidity	10% ~ 90%
Storage temperature	-20°C ~ +60°C	



ASF1117A-TA
 ASF3217A-TA
 ASF4317A-TA
 ASF5517A-TA

SMART TOUCH SIGNAGE

MOUNTING SERIES

Customer interaction
 Run competitions
 Market surveys
 Play games

MOUNT
 OR SET AS
 DESK



Images for illustration purpose only



ASF117A-TA

ASF3217A-TA

ASF4317A-TA

AFS5517A-TA

SYSTEM	Main IC Model	Hi3751 V320	Hi3751 V600	Hi3751 V600	Hi3751 V600
	CPU	ARM Cortex-A53 CPU	Quad Core A53 CPU	Quad Core A53 CPU	Quad Core A53 CPU
	GPU	Hexa Core GPU	Hexa Core GPU	Hexa Core GPU	Hexa Core GPU
	Memory	512MB DDR3	2GB DDR3	2GB DDR3	2GB DDR3
	NAND Flash	8GB eMMC Flash	8GB eMMC Flash	8GB eMMC Flash	8GB eMMC Flash
	Android Version	Android 4.4	Android 5.1	Android 5.1	Android 5.1
	Online AD System	Cybercast	Cybercast	Cybercast	Cybercast
	Panel Size	10.6 inches (27cm) Diagonal	32 inches (81cm) Diagonal	43 inches (109cm) Diagonal	55 inches (140cm) Diagonal
	Panel Native Resolution	1920 x 1080 pixels	1920 x 1080 pixels	1920 x 1080 pixels	1920 x 1080 pixels
	Aspect Ratio	16:9	16:9	16:9	16:9
	Back light	ELED	ELED	ELED	ELED
	Viewing angle (H/V)	178 / 178 degree	178 / 178 degree	178 / 178 degree	178 / 178 degree
	Brightness	350 cd/m ² (Typ)	320 cd/m ² (Typ)	320 cd/m ² (Typ)	320 cd/m ² (Typ)
	Touch Technology	Capacitive touch screen (Glass + Glass)	Capacitive touch screen (Glass + Glass)	Capacitive touch screen (Glass + Glass)	Capacitive touch screen (Glass + Glass)
Touch Inputs	10 points	10 points	10 points	10 points	
Touch Response Speed	< 12ms	< 12ms	< 12ms	< 12ms	
Working Life	50000 MTBF (7 x 24 hours)	50000 MTBF (7 x 24 hours)	50000 MTBF (7 x 24 hours)	50000 MTBF (7 x 24 hours)	
DESIGN	Screen Protector	-	Physics tempered glass	Physics tempered glass	Physics tempered glass
	Sound Output (RMS)	1 x 3 W	2 x 3 W	2 x 3 W	2 x 5 W
	Front Colour	Black	Gold / Silver / Black	Gold / Silver / Black	Black
	Frame Material	High Strength Cold Rolled Plate	Aluminum Alloy Anodic Anodization Coloring	Aluminum Alloy Anodic Anodization Coloring	Aluminum Alloy Anodic Anodization Coloring
	Rear Cover Material	High Strength Cold Rolled Plate	High Strength Cold Rolled Plate	High Strength Cold Rolled Plate	High Strength Cold Rolled Plate
	Standard Base	-	-	-	-
	Wall Mount Support	-	Yes	Yes	Yes
	Anti-theft Lock	-	Yes	Yes	Yes
	Base Wheel	-	-	-	-
	HDMI Out	-	-	-	-
INPUT & OUTPUT	HDMI In	1	1	1	1
	Component in (Y/PB/Pr)	-	-	-	-
	PC in (D-sub)	-	-	-	-
	Composite in (AV)	-	Mini Jack*1	Mini Jack*1	Mini Jack*1
	PC Audio In / DVI Audio in (Mini Jack)	-	-	-	-
	RF In	-	Australia only	Australia only	Australia only
	Line Out	-	1	1	1
	IR Out	-	-	-	-
	RS232	1	1	1	1
	USB 3.0	1	1	1	1
USB 2.0	1	1	1	1	
Card Reader	-	Micro SD*1	Micro SD*1	Micro SD*1	
Ethernet (LAN)	-	1	1	1	
FEATURE	Wireless LAN Built-in	IEEE802.11 b/g/n, 2.4GHz	IEEE802.11 b/g/n, 2.4GHz	IEEE802.11 b/g/n, 2.4GHz	IEEE802.11 b/g/n, 2.4GHz
	Wireless BT Built-in	Optional	Optional	Optional	Optional
	3G/4G Built-in	Optional	Optional	Optional	Optional
	Built-in battery	Real-time clock function	Real-time clock function	Real-time clock function	Real-time clock function
	Timing switch	Built-in single chip to set Standby On/Off	Built-in single chip to set Standby On/Off	Built-in single chip to set Standby On/Off	Built-in single chip to set Standby On/Off
	Watch Dog	Yes	Yes	Yes	Yes
ELECTRICAL	Working temperature	0°C ~ +45°C	0°C ~ +45°C	0°C ~ +45°C	0°C ~ +45°C
	Working humidity	10% ~ 90%	10% ~ 90%	10% ~ 90%	10% ~ 90%
	Storage temperature	-20°C ~ +60°C	-20°C ~ +60°C	-20°C ~ +60°C	-20°C ~ +60°C



ASF3217B-TA
ASF4317B-TA
ASF5517B-TA

SMART TOUCH SIGNAGE

DESK SERIES



**Customer registration
& feedback
Visitor sign-in
Interactive maps**



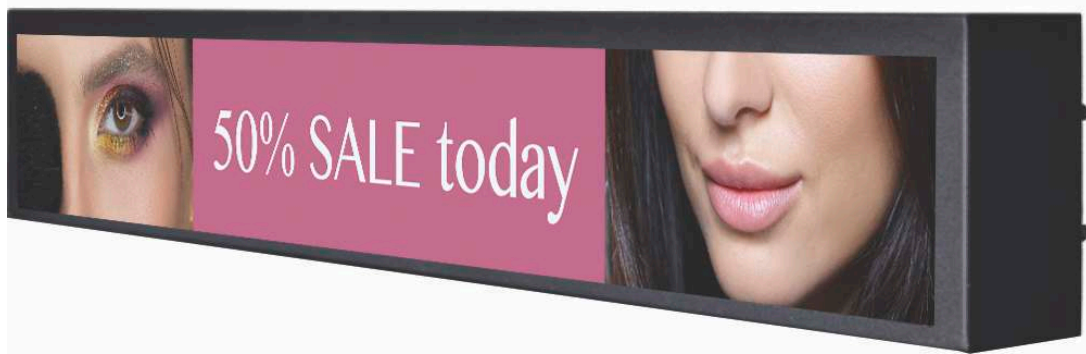
Images for illustration purpose only

ASF3217B-TA

ASF4317B-TA

AFS5517B-TA

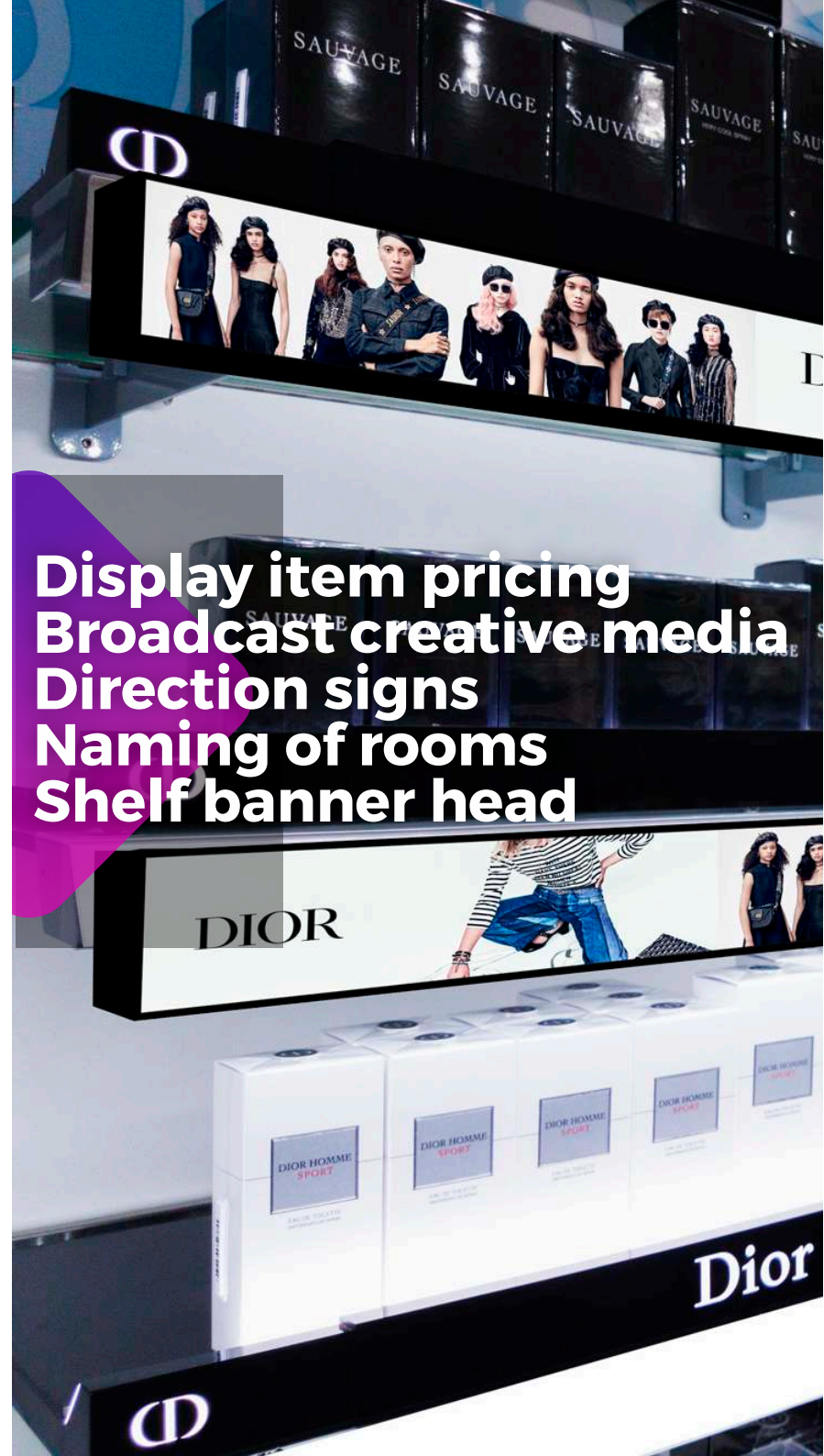
SYSTEM	Main IC Model	Hi3751 V600	Hi3751 V600	Hi3751 V600	
	CPU	Quad Core A53 CPU	Quad Core A53 CPU	Quad Core A53 CPU	
	GPU	Hexa Core GPU	Hexa Core GPU	Hexa Core GPU	
	Memory	2GB DDR3	2GB DDR3	2GB DDR3	
	NAND Flash	8GB eMMC Flash	8GB eMMC Flash	8GB eMMC Flash	
	Android Version	Android 5.1	Android 5.1	Android 5.1	
	Online AD System	Cybercast	Cybercast	Cybercast	
	Panel Size	32 inches (81cm) Diagonal	43 inches (109cm) Diagonal	55 inches (140cm) Diagonal	
	Panel Native Resolution	1920 x 1080 pixels	1920 x 1080 pixels	1920 x 1080 pixels	
	Aspect Ratio	16:9	16:9	16:9	
	Back light	ELED	ELED	ELED	
	Viewing angle (H/V)	178 / 178 degree	178 / 178 degree	178 / 178 degree	
	Brightness	320 cd/m ² (Typ)	320 cd/m ² (Typ)	320 cd/m ² (Typ)	
	Touch Technology	TM - Touch Metal Mesh	TM - Touch Metal Mesh	TM - Touch Metal Mesh	
	Touch Inputs	5 - 10 points	5 - 10 points	5 - 10 points	
Touch Response Speed	< 12ms	< 12ms	< 12ms		
Working Life	50000 MTBF (7 x 24 hours)	50000 MTBF (7 x 24 hours)	50000 MTBF (7 x 24 hours)		
DESIGN	Screen Protector	Physics tempered glass	Physics tempered glass	Physics tempered glass	
	Sound Output (RMS)	2 x 3 W	2 x 3 W	2 x 3 W	
	Front Colour	Gold / Silver / Black	Gold / Silver / Black	Gold / Silver / Black	
	Frame Material	Aluminum Alloy Anodic Anodization Coloring	Aluminum Alloy Anodic Anodization Coloring	Aluminum Alloy Anodic Anodization Coloring	
	Rear Cover Material	High Strength Cold Rolled Plate	High Strength Cold Rolled Plate	High Strength Cold Rolled Plate	
	Standard Base	-	-	-	
	Wall Mount Support	Optional	Optional	Optional	
	Anti-theft Lock	Yes	Yes	Yes	
	Base Wheel	-	-	-	
	INPUT & OUTPUT	HDMI Out	-	-	-
		HDMI In	1	1	1
		Component in (Y/PB/Pr)	-	-	-
		PC in (D-sub)	-	-	-
		Composite in (AV)	Mini Jack*1	Mini Jack*1	Mini Jack*1
		PC Audio In / DVI Audio in (Mini Jack)	-	-	-
RF In		Australia only	Australia only	Australia only	
Line Out		1	1	1	
IR Out		-	-	-	
RS232		1	1	1	
USB 3.0		1	1	1	
USB 2.0		1	1	1	
Card Reader		Micro SD*1	Micro SD*1	Micro SD*1	
Ethernet (LAN)		1	1	1	
FEATURE		Wireless LAN Built-in	IEEE802.11 b/g/n, 2.4GHz	IEEE802.11 b/g/n, 2.4GHz	IEEE802.11 b/g/n, 2.4GHz
	Wireless BT Built-in	Optional	Optional	Optional	
	3G/4G Built-in	Optional	Optional	Optional	
	Built-in battery	Real-time clock function	Real-time clock function	Real-time clock function	
	Timing switch	Built-in single chip to set Standby On/Off	Built-in single chip to set Standby On/Off	Built-in single chip to set Standby On/Off	
	Watch Dog	Yes	Yes	Yes	
ELECTRICAL	Working temperature	0°C ~ +45°C	0°C ~ +45°C	0°C ~ +45°C	
	Working humidity	10% ~ 90%	10% ~ 90%	10% ~ 90%	
	Storage temperature	-20°C ~ +60°C	-20°C ~ +60°C	-20°C ~ +60°C	



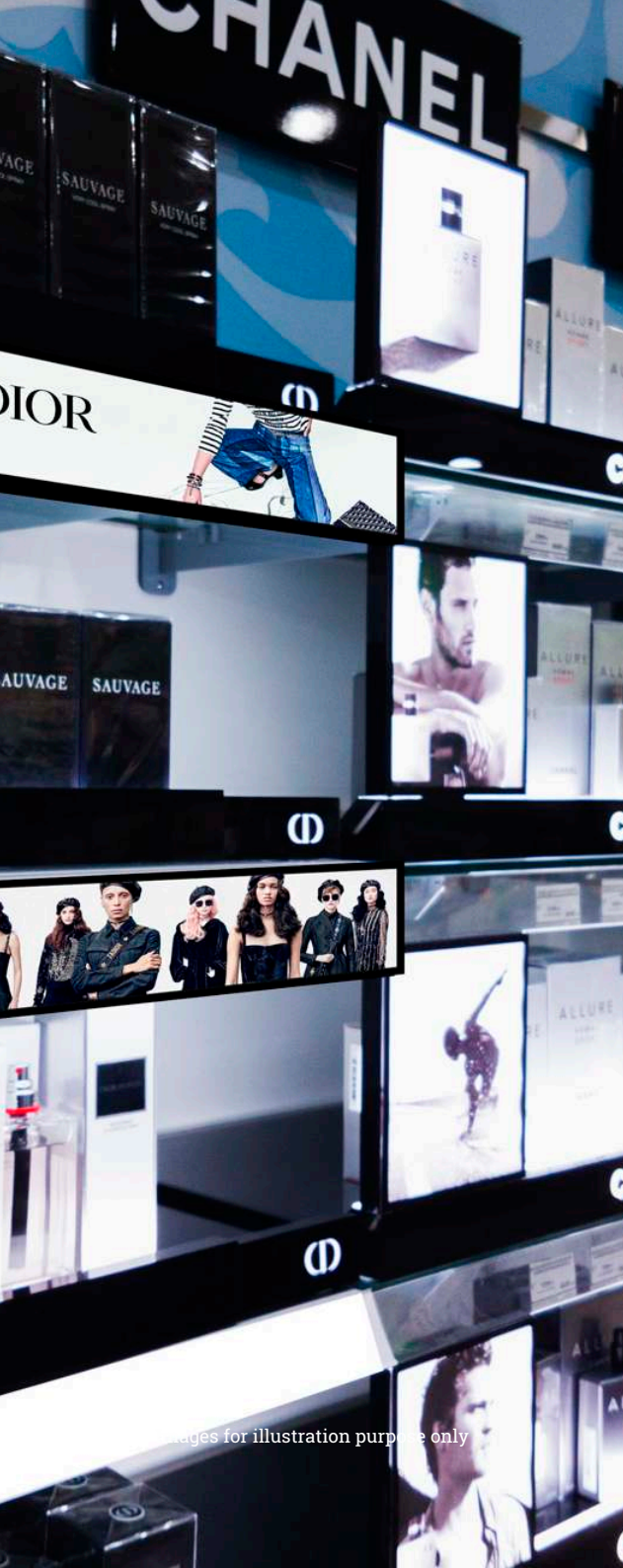
ASF2917A-GA
ASF3717A-GA
ASF1617A-GA

SMART SHELF SIGNAGE

SHELF SERIES



Display item pricing
Broadcast creative media
Direction signs
Naming of rooms
Shelf banner head



Images for illustration purpose only

ASF2917A-GA

ASF3717A-GA

ASF1617A-GA

SYSTEM	Main IC Model	Hi3751 V600	Hi3751 V600	Hi375-ARBCV320
	CPU	Quad Core A53 CPU	Quad Core A53 CPU	ARM Cortex A53 CPU
	GPU	Hexa Core GPU	Hexa Core GPU	Hexa Core GPU
	Memory	2GB DDR3	2GB DDR3	512MB DDR3
	NAND Flash	8GB eMMC Flash	8GB eMMC Flash	8GB eMMC Flash
	Android Version	Android 5.1	Android 5.1	Android 4.4
	Online AD System	Cybercast	Cybercast	Cybercast
	Panel Size	29 inches (74cm) Diagonal	37 inches (94cm) Diagonal	16.2 inches (41cm) Diagonal
	Panel Native Resolution	1920 x 540 pixels	1920 x 540 pixels	1366 x 192 pixels
	Aspect Ratio	7:2	7:2	16:9
	Back light	ELED	ELED	ELED
	Viewing angle (H/V)	178 / 178 degree	178 / 178 degree	178 / 178 degree
	Brightness	500 cd/m ² (Typ)	700 cd/m ² (Typ)	350 cd/m ² (Typ)
	Touch Technology	-	-	-
Touch Inputs	-	-	-	
Touch Response Speed	-	-	-	
Working Life	50000 MTBF (7 x 24 hours)	50000 MTBF (7 x 24 hours)	50000 MTBF (7 x 24 hours)	
DESIGN	Screen Protector	-	-	-
	Sound Output (RMS)	2 x 3 W	2 x 3 W	-
	Front Colour	Silver / Black	Silver / Black	Black
	Frame Material	High Strength Cold Rolled Plate	High Strength Cold Rolled Plate	High Strength Cold Rolled Plate
	Rear Cover Material	High Strength Cold Rolled Plate	High Strength Cold Rolled Plate	High Strength Cold Rolled Plate
	Standard Base	-	-	-
	Wall Mount Support	Yes	Yes	-
	Anti-theft Lock	Yes	Yes	-
	Base Wheel	-	-	-
	HDMI Out	-	-	-
INPUT & OUTPUT	HDMI In	1	1	1
	Component in (Y/PB/Pr)	-	-	-
	PC in (D-sub)	-	-	-
	Composite in (AV)	Mini Jack*1	Mini Jack*1	-
	PC Audio In / DVI Audio in (Mini Jack)	-	-	-
	RF In	-	-	-
	Line Out	1	1	-
	IR Out	-	-	-
	RS232	1	1	-
	USB 3.0	1	1	1
	USB 2.0	1	1	1
	Card Reader	Micro SD*1	Micro SD*1	-
	Ethernet (LAN)	1	1	-
	Wireless LAN Built-in	IEEE802.11 b/g/n, 2.4GHz	IEEE802.11 b/g/n, 2.4GHz	IEEE802.11 b/g/n, 2.4GHz
FEATURE	Wireless BT Built-in	Optional	Optional	Optional
	3G/4G Built-in	Optional	Optional	Optional
	Built-in battery	Real-time clock function	Real-time clock function	Real-time clock function
	Timing switch	Built-in single chip to set Standby On/Off	Built-in single chip to set Standby On/Off	-
	Watch Dog	Yes	Yes	Yes
ELECTRICAL	Working temperature	0°C ~ +45°C	0°C ~ +45°C	0°C ~ +45°C
	Working humidity	10% ~ 90%	10% ~ 90%	10% ~ 90%
	Storage temperature	-20°C ~ +60°C	-20°C ~ +60°C	-20°C ~ +60°C

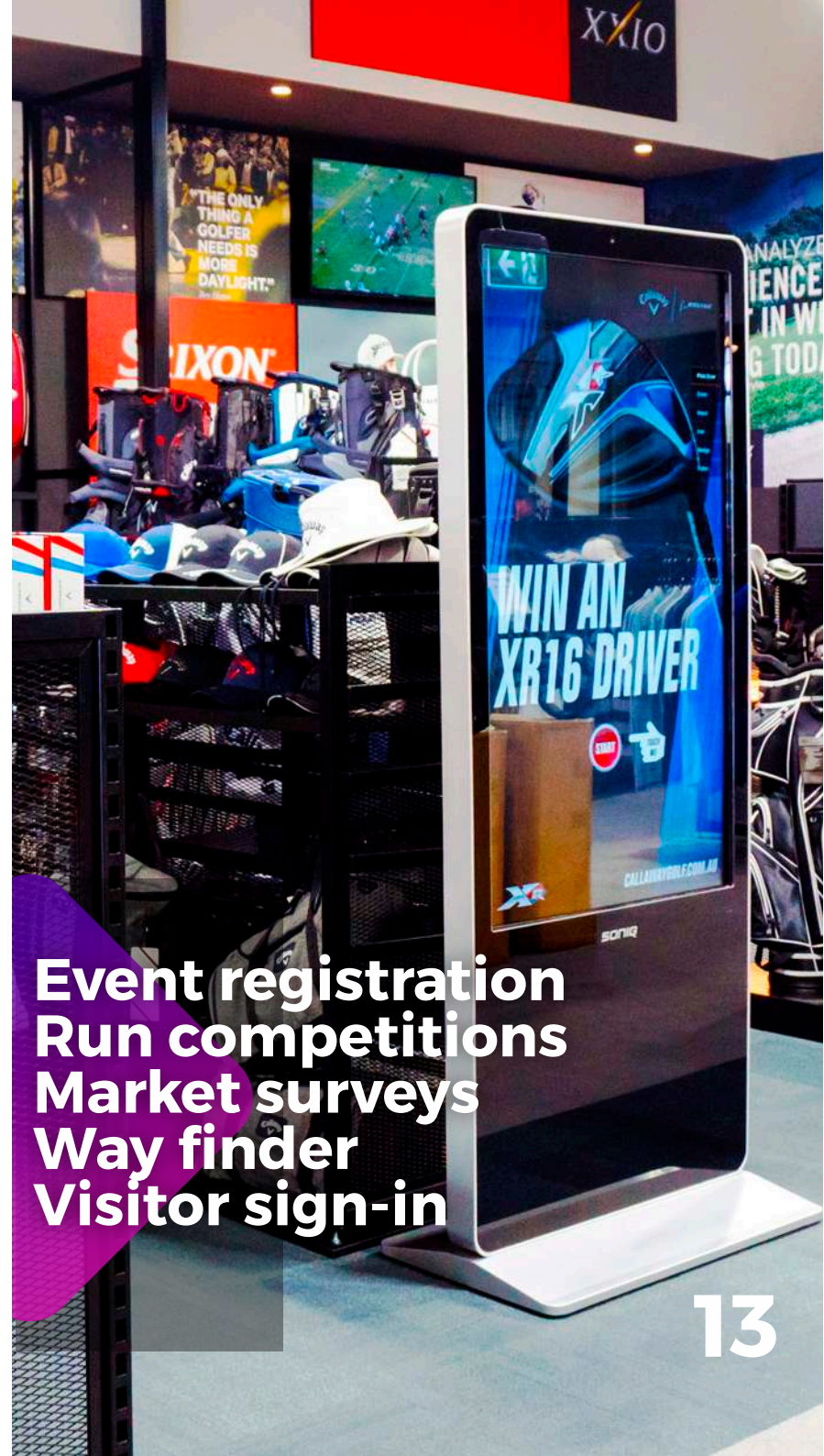


ASF4317C-TA
ASF5517C-TA

SMART KIOSK SIGNAGE

KIOSK TOUCH SERIES

Event registration
Run competitions
Market surveys
Way finder
Visitor sign-in



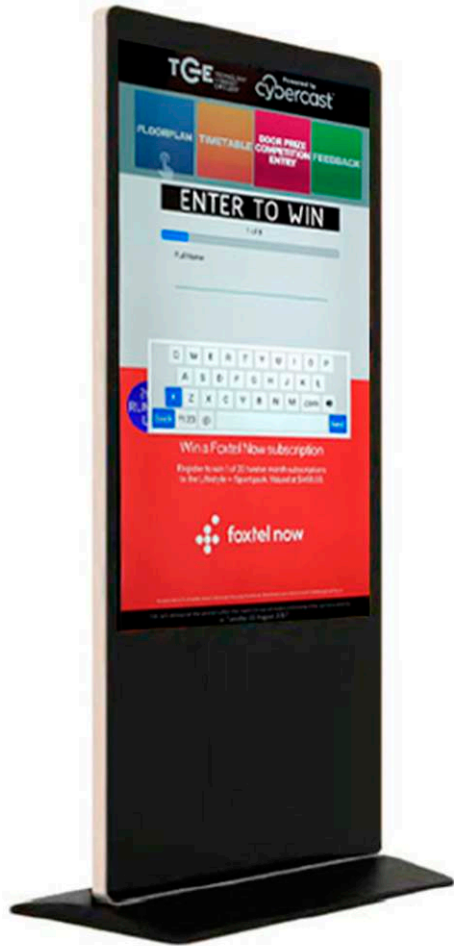


Images for illustration purpose only

ASF4317C-TA

ASF5517C-TA

SYSTEM	Main IC Model	Hi3751 V600	Hi3751 V600
	CPU	Quad Core A53 CPU	Quad Core A53 CPU
	GPU	Hexa Core GPU	Hexa Core GPU
	Memory	2GB DDR3	2GB DDR3
	NAND Flash	8GB eMMC Flash	8GB eMMC Flash
	Android Version	Android 5.1	Android 5.1
	Online AD System	Cybercast	Cybercast
	Panel Size	43 inches (109cm) Diagonal	55 inches (140cm) Diagonal
	Panel Native Resolution	1920 x 1080 pixels	1920 x 1080 pixels
	Aspect Ratio	16:9	16:9
	Back light	ELED	ELED
	Viewing angle (H/V)	178 / 178 degree	178 / 178 degree
DESIGN	Brightness	320 cd/m ² (Typ)	320 cd/m ² (Typ)
	Touch Technology	Infrared	Infrared
	Touch Inputs	10 touches with palm rejection	10 touches with palm rejection
	Touch Response Speed	150 points/sec	150 points/sec
	Working Life	50000 MTBF (7 x 24 hours)	50000 MTBF (7 x 24 hours)
	Screen Protector	Physics tempered glass	Physics tempered glass
	Sound Output (RMS)	2 x 3 W	2 x 3 W
	Front Colour	Gold / Silver / Black	Gold / Silver / Black
	Frame Material	Aluminum Alloy Painting	Aluminum Alloy Painting
	Rear Cover Material	High Strength Cold Rolled Plate	High Strength Cold Rolled Plate
	Standard Base	Yes	Yes
	Wall Mount Support	-	-
INPUT & OUTPUT	Anti-theft Lock	Yes	Yes
	Base Wheel	Optional	Optional
	HDMI Out	-	-
	HDMI In	1	1
	Component in (Y/PB/Pr)	-	-
	PC in (D-sub)	-	-
	Composite in (AV)	Mini Jack*1	Mini Jack*1
	PC Audio In / DVI Audio in (Mini Jack)	-	-
	RF In	Australia only	Australia only
	Line Out	1	1
	IR Out	-	-
	RS232	1	1
FEATURE	USB 3.0	1	1
	USB 2.0	1	1
	Card Reader	Micro SD*1	Micro SD*1
	Ethernet (LAN)	1	1
	Wireless LAN Built-in	IEEE802.11 b/g/n, 2.4GHz	IEEE802.11 b/g/n, 2.4GHz
	Wireless BT Built-in	Optional	Optional
ELECTRICAL	3G/4G Built-in	Optional	Optional
	Built-in battery	Real-time clock function	Real-time clock function
	Timing switch	Built-in single chip to set Standby On/Off	Built-in single chip to set Standby On/Off
	Watch Dog	Yes	Yes
ELECTRICAL	Working temperature	0°C ~ +45°C	0°C ~ +45°C
	Working humidity	10% ~ 90%	10% ~ 90%
	Storage temperature	-20°C ~ +60°C	-20°C ~ +60°C



ASF4317D-TA
ASF5517D-TA

SMART KIOSK SIGNAGE

KIOSK CAPACITIVE TOUCH SERIES



Event registration
Run competitions
Market surveys
Interactive maps
Visitor sign-in



Images for illustration purpose only

ASF4317D-TA

ASF5517D-TA

SYSTEM	Main IC Model	Hi3751 V600	Hi3751 V600
	CPU	Quad Core A53 CPU	Quad Core A53 CPU
	GPU	Hexa Core GPU	Hexa Core GPU
	Memory	2GB DDR3	2GB DDR3
	NAND Flash	8GB eMMC Flash	8GB eMMC Flash
	Android Version	Android 5.1	Android 5.1
	Online AD System	Cybercast	Cybercast
	Panel Size	43 inches (109cm) Diagonal	55 inches (140cm) Diagonal
	Panel Native Resolution	1920 x 1080 pixels	1920 x 1080 pixels
	Aspect Ratio	16:9	16:9
	Back light	ELED	ELED
	Viewing angle (H/V)	178 / 178 degree	178 / 178 degree
	Brightness	320 cd/m ² (Typ)	320 cd/m ² (Typ)
DESIGN	Touch Technology	Capacitive touch screen (Glass+ Glass)	Capacitive touch screen (Glass+ Glass)
	Touch Inputs	10 points	10 points
	Touch Response Speed	< 12 ms	< 12 ms
	Working Life	50000 MTBF (7 x 24 hours)	50000 MTBF (7 x 24 hours)
	Screen Protector	Physics tempered glass	Physics tempered glass
	Sound Output (RMS)	2 x 3 W	2 x 3 W
	Front Colour	Gold / Silver / Black	Gold / Silver / Black
	Frame Material	Aluminum Alloy Painting	Aluminum Alloy Painting
	Rear Cover Material	High Strength Cold Rolled Plate	High Strength Cold Rolled Plate
	Standard Base	Yes	Yes
	Wall Mount Support	-	-
	Anti-theft Lock	Yes	Yes
	Base Wheel	Optional	Optional
INPUT & OUTPUT	HDMI Out	-	-
	HDMI In	1	1
	Component in (Y/PB/Pr)	-	-
	PC in (D-sub)	-	-
	Composite in (AV)	Mini Jack*1	Mini Jack*1
	PC Audio In / DVI Audio in (Mini Jack)	-	-
	RF In	Australia only	Australia only
	Line Out	1	1
	IR Out	-	-
	RS232	1	1
	USB 3.0	1	1
	USB 2.0	1	1
	Card Reader	Micro SD*1	Micro SD*1
Ethernet (LAN)	1	1	
FEATURE	Wireless LAN Built-in	IEEE802.11 b/g/n, 2.4GHz	IEEE802.11 b/g/n, 2.4GHz
	Wireless BT Built-in	Optional	Optional
	3G/4G Built-in	Optional	Optional
	Built-in battery	Real-time clock function	Real-time clock function
	Timing switch	Built-in single chip to set Standby On/Off	Built-in single chip to set Standby On/Off
	Watch Dog	Yes	Yes
ELECTRICAL	Working temperature	0°C ~ +45°C	0°C ~ +45°C
	Working humidity	10% ~ 90%	10% ~ 90%
	Storage temperature	-20°C ~ +60°C	-20°C ~ +60°C



ASF4317B-GA
ASF5517B-GA
ASU6517B-GA

SMART KIOSK SIGNAGE

KIOSK NON TOUCH SERIES

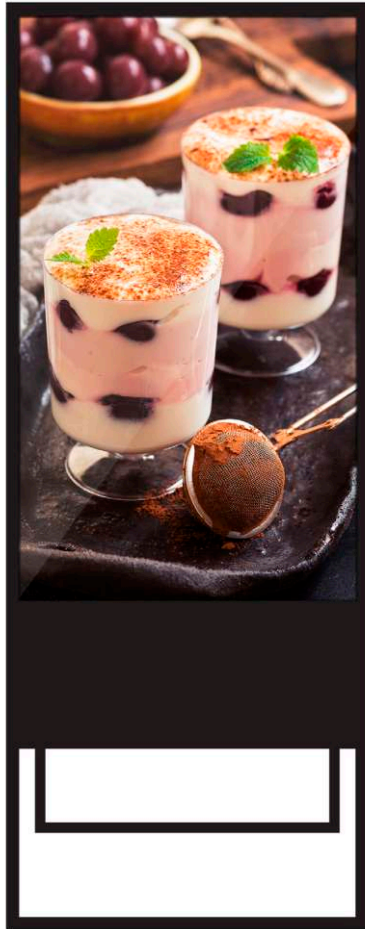


Run promotions
& advertising
Community message board
Internal communication

Images for illustration purpose only



		ASF4317B-GA	ASF5517B-GA	ASU6517B-GA
SYSTEM	Main IC Model	Hi3751 V600	Hi3751 V600	Hi3751 V600
	CPU	Quad Core A53 CPU	Quad Core A53 CPU	Quad Core A53 CPU
	GPU	Hexa Core GPU	Hexa Core GPU	Hexa Core GPU
	Memory	2GB DDR3	2GB DDR3	2GB DDR3
	NAND Flash	8GB eMMC Flash	8GB eMMC Flash	8GB eMMC Flash
	Android Version	Android 5.1	Android 5.1	Android 5.1
	Online AD System	Cybercast	Cybercast	Cybercast
	Panel Size	43 inches (109cm) Diagonal	55 inches (140cm) Diagonal	65 inches (165cm) Diagonal
	Panel Native Resolution	1920 x 1080 pixels	1920 x 1080 pixels	3840 x 2160 pixels
	Aspect Ratio	16:9	16:9	16:9
	Back light	ELED	ELED	ELED
	Viewing angle (H/V)	178 / 178 degree	178 / 178 degree	178 / 178 degree
	Brightness	450 nit	450 nit	450 nit
	Touch Technology	-	-	-
	Touch Inputs	-	-	-
	Touch Response Speed	-	-	-
	Working Life	50000MTBF (7 x 24 hours)	50000 MTBF (7 x 24 hours)	50000 MTBF (7 x 24 hours)
DESIGN	Screen Protector	Physics tempered glass	Physics tempered glass	Physics tempered glass
	Sound Output (RMS)	2 x 3 W	2 x 3 W	2 x 3 W
	Front Colour	Gold / Silver / Black	Gold / Silver / Black	Gold / Silver / Black
	Frame Material	Aluminum Alloy Painting	Aluminum Alloy Painting	Aluminum Alloy Painting
	Rear Cover Material	High Strength Cold Rolled Plate	High Strength Cold Rolled Plate	High Strength Cold Rolled Plate
	Standard Base	Yes	Yes	Yes
	Wall Mount Support	-	-	-
	Anti-theft Lock	Yes	Yes	Yes
	Base Wheel	Optional	Optional	Optional
	INPUT & OUTPUT	HDMI Out	-	-
HDMI In		1	1	1
Component in (Y/PB/Pr)		-	-	-
PC in (D-sub)		-	-	-
Composite in (AV)		Mini Jack*1	Mini Jack*1	Mini Jack*1
PC Audio In / DVI Audio in (Mini Jack)		-	-	-
RF In		Australia only	Australia only	Australia only
Line Out		1	1	1
IR Out		-	-	-
RS232		1	1	1
USB 3.0		1	1	1
USB 2.0		1	1	1
Card Reader		Micro SD*1	Micro SD*1	Micro SD*1
Ethernet (LAN)	1	1	1	
FEATURE	Wireless LAN Built-in	IEEE802.11 b/g/n, 2.4GHz	IEEE802.11 b/g/n, 2.4GHz	IEEE802.11 b/g/n, 2.4GHz
	Wireless BT Built-in	Optional	Optional	Optional
	3G/4G Built-in	Optional	Optional	Optional
	Built-in battery	Real-time clock function	Real-time clock function	Real-time clock function
	Timing switch	Built-in single chip to set Standby On/Off	Built-in single chip to set Standby On/Off	Built-in single chip to set Standby On/Off
	Watch Dog	Yes	Yes	Yes
ELECTRICAL	Working temperature	0°C ~ +45°C	0°C ~ +45°C	0°C ~ +45°C
	Working humidity	10% ~ 90%	10% ~ 90%	10% ~ 90%
	Storage temperature	-20°C ~ +60°C	-20°C ~ +60°C	-20°C ~ +60°C



ASF4318A-GA

SMART KIOSK SIGNAGE

FOLDABLE NON TOUCH SERIES

Menu boards
Product discounts
& specials
Community message board
Internal communication
Social media feed

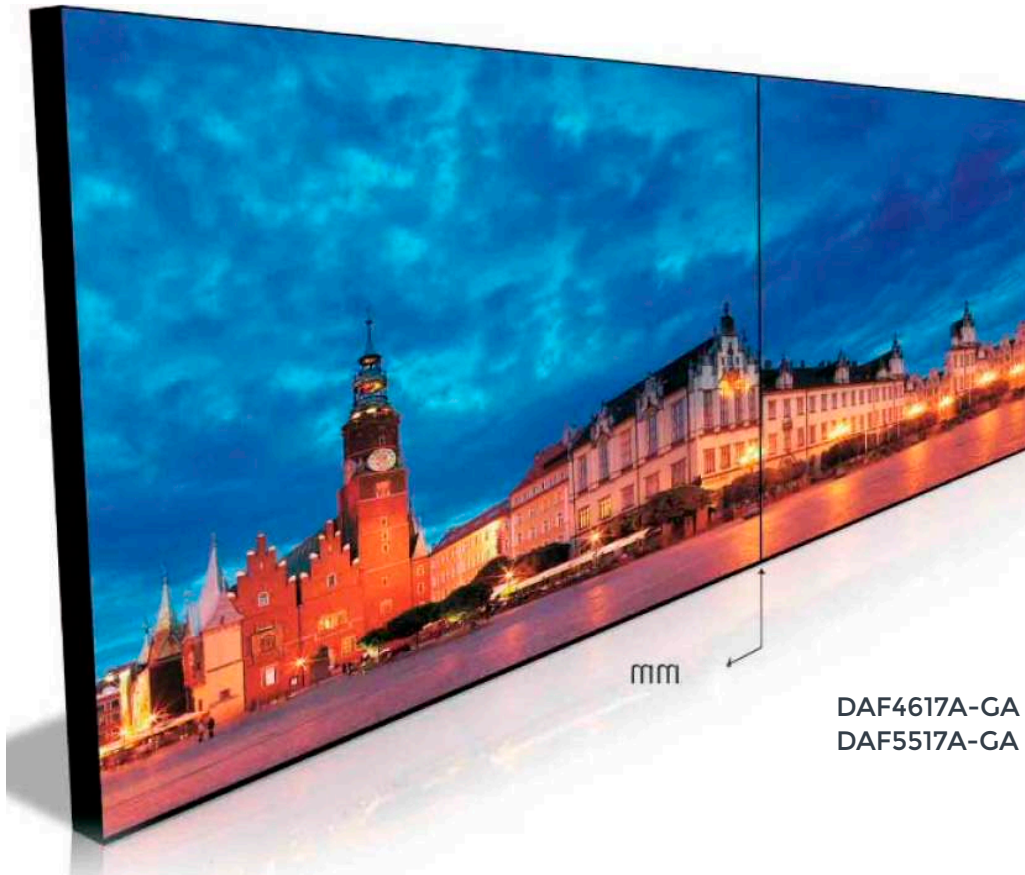




Images for illustration purpose only

ASF4318A-GA

SYSTEM	Main IC Model	Rackchip RK3288
	CPU	Cortex-A17
	GPU	ARM Mali-T764
	Memory	2GB DDR3
	NAND Flash	16GB eMMC Flash
	Android Version	Android 5.1
	Online AD System	Cybercast
	Panel Size	43 inches (109cm) Diagonal
	Panel Native Resolution	1920 x 1080 pixels
	Aspect Ratio	16:9
	Back light	ELED
	Viewing angle (H/V)	178 / 178 degree
	Brightness	350 cd/m ² (Typ)
Touch Technology	-	
Touch Inputs	-	
Touch Response Speed	-	
Working Life	50000 MTBF (7 x 24 hours)	
DESIGN	Screen Protector	Physics tempered glass
	Sound Output (RMS)	2 x 3 W
	Front Colour	Gold / Silver / Black
	Frame Material	Aluminum Alloy Painting
	Rear Cover Material	High Strength Cold Rolled Plate
	Standard Base	-
	Wall Mount Support	-
	Anti-theft Lock	-
	Base Wheel	-
	HDMI Out	1
INPUT & OUTPUT	HDMI In	-
	Component in (Y/PB/Pr)	-
	PC in (D-sub)	-
	Composite in (AV)	-
	PC Audio In / DVI Audio in (Mini Jack)	-
	RF In	-
	Line Out	-
	IR Out	-
	RS232	-
	USB 3.0	-
	USB 2.0	2
	Card Reader	SD*1
	Ethernet (LAN)	1
FEATURE	Wireless LAN Built-in	IEEE802.11 b/g/n, 2.4GHz
	Wireless BT Built-in	Optional
	3G/4G Built-in	Optional
	Built-in battery	Real-time clock function
	Timing switch	Built-in single chip to set Standby On/Off
ELECTRICAL	Watch Dog	Yes
	Working temperature	0°C ~ +45°C
	Working humidity	10% ~ 90%
	Storage temperature	-20°C ~ +60°C



DID DISPLAY

WALL SERIES

Ideal for showrooms,
shopping centres,
corporate office,
& art galleries.





Images for illustration purpose only

DAF4617A-GA

DAF5517A-GA

	DAF4617A-GA	DAF5517A-GA	
SYSTEM	Module size	1023.98 (H) x 578.57 (V) x 67.5 (D) mm	1215.5 (H) x 686.3 (V) x 68.1(D) mm
	Display area	1018.08 (H) x 57.60 (V) mm	1209.6 (H) x 680.4 (V) mm
	Viewing angle (H/V)	±178°C	±178°C
	Aspect Ratio	16:9	16:9
	Narrow bezel	3.9 or 5.7 mm	3.9 or 5.7 mm
	Number of pixel	1920 (H) x 1080 (V)	1920 (H) x 1080 (V)
	Pixel pitch	0.53 (H) x 0.53 (V)	0.63 (H) x 0.63 (V)
	Response time	8 ms	8 ms
	Display colors	8 bit - 16.7M (Colors)	8 bit - 16.7M (Colors)
	Brightness	500 cd/m ² (Typ)	500 cd/m ² (Typ)
	Contrast ratio	3500	3500
	Color temperature	10000 K	10000 K
	Power supply	100 - 240 V ~, 50 / 60Hz	100 - 240 V ~, 50 / 60Hz
	Power consumption	130 W (Normal Condition)	165 W (Normal Condition)
	Operating life time	50000 MTBF (7 x 24 hours)	50000 MTBF (7 x 24 hours)
INPUT INTERFACE	Net Weight	27.5 kg / unit	33.5 kg / unit
	HDMI x 1	NTSC(60Hz) 480p, 720p, 1080i, 1080p	NTSC(60Hz) 480p, 720p, 1080i, 1080p
		PAL(50Hz) 576p, 720p, 1080i, 1080p	PAL(50Hz) 576p, 720p, 1080i, 1080p
		NTSC(60Hz) 480p, 720p, 1080i, 1080p	NTSC(60Hz) 480p, 720p, 1080i, 1080p
DVI x 1	PAL(50Hz) 576p, 720p, 1080i, 1080p	PAL(50Hz) 576p, 720p, 1080i, 1080p	
ELECTRICAL	VGA x 1	1920 x 1080 @60Hz	1920 x 1080 @60Hz
	Working temperature	0°C ~ +45°C	0°C ~ +45°C
	Working humidity	10% ~ 90%	10% ~ 90%
	Storage temperature	-20°C ~ +60°C	-20°C ~ +60°C
EXTRAS	Accessories	Power cord *1, DVI-D cable *1, Network Line *1	Power cord *1, DVI-D cable *1, Network Line *1

FEATURES

- Original Samsung Full HD 1920x1080 pixels DID LCD panel and components
- Senior MACE - PRO engine color, ensures color uniformity and fidelity across individual and multiple screens, creating a perfect image
- Ground breaking ultra-narrow bezel of 3.9mm or 5.7mm creates a nearly seamless video wall
- Adopting FPGA processing technology, enables video walls up to 80 displays
- Realizing diversity effects such as single, combined, segmented and roaming effects without Matrix
- Supporting serial port control from PC part, simple and distinct PC software is designer based on simulation operating area for the convenience of users and maintenance



ASU6517A-TB
ASU7517A-TB

SMART INTERACTIVE ELECTRONIC WHITEBOARD

ELECTRONIC BOARD SERIES

Perfect for class rooms,
training rooms,
& lecture halls.





Images for illustration purpose only

ASU6517A-TB

ASU7517A-TB

SYSTEM	Main IC Model	MSD6A828	MSD6A828	
	CPU	Quad Core A53 CPU	Quad Core A53 CPU	
	GPU	Hexa Core GPU	Hexa Core GPU	
	Memory	2GB DDR3	2GB DDR3	
	NAND Flash	8GB eMMC Flash	8GB eMMC Flash	
	Android Version	Android 5.0	Android 5.0	
	OPS	Optional	Optional	
	Online AD System	-	-	
	Panel Size	65 inches (165cm) Diagonal	75 inches (190cm) Diagonal	
	Panel Native Resolution	3840 x 2160 pixels	3840 x 2160 pixels	
	Aspect Ratio	16:9	16:9	
	Back light	DLED	DLED	
	Viewing angle (H/V)	178 / 178 degree	178 / 178 degree	
	Brightness	350 cd/m ² (Typ)	350 cd/m ² (Typ)	
DESIGN	Touch Technology	Infrared	Infrared	
	Touch Inputs	10 touches with palm rejection	10 touches with palm rejection	
	Touch Response Speed	150 points/sec	150 points/sec	
	Working Life	50000 MTBF (7 x 24 hours)	50000 MTBF (7 x 24 hours)	
	Screen Protector	Anti-Reflection Physics tempered glass	Anti-Reflection Physics tempered glass	
	Sound Output (RMS)	2 x 15 W	2 x 15 W	
	Front Colour	Gold / Silver / Black	Gold / Silver / Black	
	Frame Material	Aluminum Alloy Anodic Anodization Coloring	Aluminum Alloy Anodic Anodization Coloring	
	Rear Cover Material	High Strength Cold Rolled Plate	High Strength Cold Rolled Plate	
	Standard Base	-	-	
	Wall Mount Support	Yes	Yes	
	Anti-theft Lock	-	-	
	INPUT & OUTPUT	Base Wheel	-	-
		HDMI In	3	3
Component in (Y/PB/Pr)		1	1	
PC in (D-sub)		2	2	
Composite in (AV)		1	1	
PC Audio In / DVI Audio in (Mini Jack)		1	1	
RF In		China only	China only	
Line Out		-	-	
Digital Audio Out (Optical)		1	1	
Headphone		1	1	
RS232		1	1	
USB		3 (Android) + 1 (OPS)	3 (Android) + 1 (OPS)	
Card Reader		-	-	
Ethernet (LAN)		1	1	
FEATURE	Wireless LAN Built-in	IEEE802.11 b/g/n, 2.4GHz	IEEE802.11 b/g/n, 2.4GHz	
	Wireless BT Built-in	Optional	Optional	
	3G/4G Built-in	Optional	Optional	
	Built-in battery	Real-time clock function	Real-time clock function	
	Timing switch	Built-in single chip to set Standby On/Off	Built-in single chip to set Standby On/Off	
	Watch Dog	Yes	Yes	
ELECTRICAL	Working temperature	0°C ~ +45°C	0°C ~ +45°C	
	Working humidity	10% ~ 90%	10% ~ 90%	
	Storage temperature	-20°C ~ +60°C	-20°C ~ +60°C	



RS232 DATA CABLE

Connect TV with PC serial port to communicate.
Control the TV by operating the Home manage
tool application



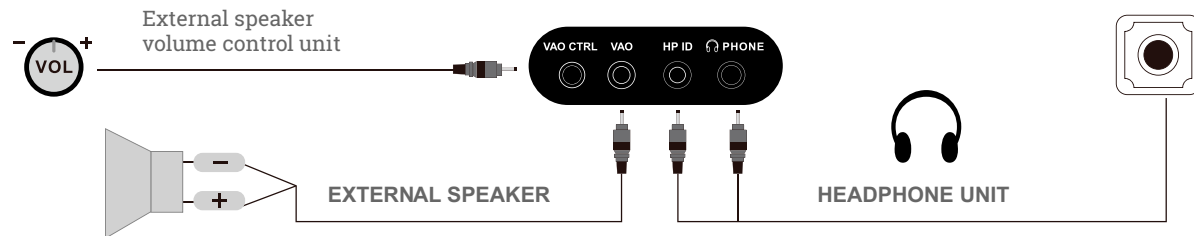
DATA CABLE

Connect with other TV to communicate



Connect
up to
254
Screens

E48FH16A-AU



SMART DISPLAY

HOTEL SERIES



Images for illustration purpose only

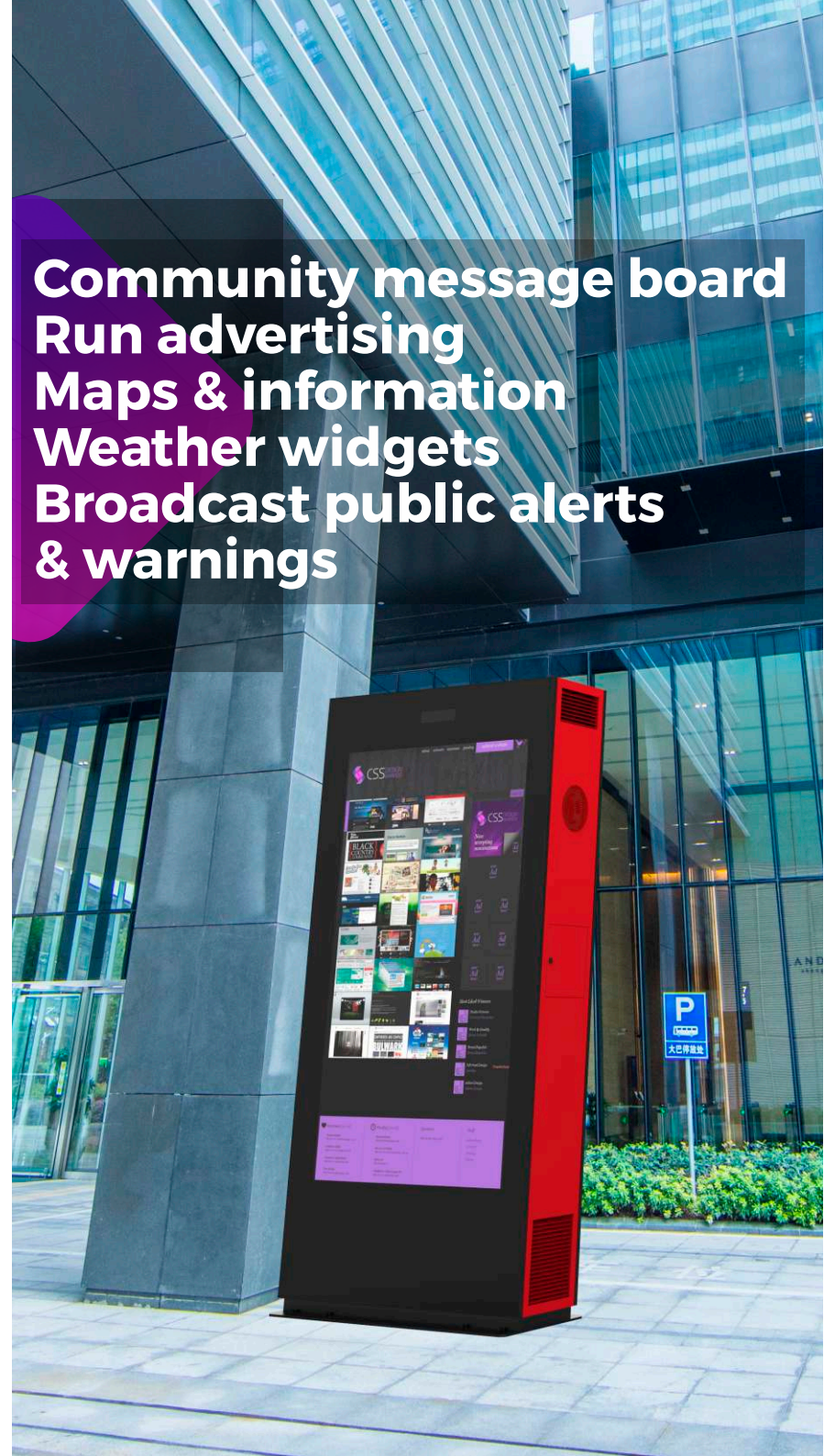


CDX86USA

SMART OUTDOOR SIGNAGE

OUTDOOR SERIES

Community message board
Run advertising
Maps & information
Weather widgets
Broadcast public alerts
& warnings





CDX86USA

FEATURES

- Power Detection
- Brightness Detection
- Temperature Detection
- Humidity Detection
- Water Immersion
- Smoke Detection
- Access Control
- Shock / Motion Detection
- Fan Detection

CDX86USA

SYSTEM	Main IC Model	Hi3751 V600
	CPU	Quad Core A53 CPU
	GPU	Hexa Core GPU
	Memory	2GB DDR3
	NAND Flash	8GB eMMC Flash
	Android Version	Android 5.1
	Online AD System	Cybercast
	Panel Size	86 inches (218cm) Diagonal
	Panel Native Resolution	3840 x 2160 pixels
	Aspect Ratio	16:9
	Back light	DLED
	Viewing angle (H/V)	178 / 178 degree
	Brightness	3500 cd/m ² (Typ)
	Touch Technology	-
Touch Inputs	-	
Touch Response Speed	-	
Working Life	50000 MTBF (7 x 24 hours)	
DESIGN	Screen Protector	-
	Sound Output (RMS)	2 x 8 W
	Front Colour	Black
	Frame Material	Aluminum Alloy Anodic Anodization Coloring
	Rear Cover Material	High Strength Cold Rolled Plate
	Standard Base	-
	Wall Mount Support	-
	Anti-theft Lock	Yes
	Base Wheel	-
	HDMI Out	-
INPUT & OUTPUT	HDMI In	1
	Component in (Y/PB/Pr)	-
	PC in (D-sub)	-
	Composite in (AV)	Mini Jack*1
	PC Audio In / DVI Audio in (Mini Jack)	-
	RF In	-
	Line Out	1
	IR Out	-
	RS232	1
	USB 3.0	1
USB 2.0	1	
Card Reader	Micro SD*1	
Ethernet (LAN)	1	
FEATURE	Wireless LAN Built-in	IEEE802.11 b/g/n, 2.4GHz
	Wireless BT Built-in	Optional
	3G/4G Built-in	Optional
	Built-in battery	Real-time clock function
	Timing switch	Built-in single chip to set Standby On/Off
ELECTRICAL	Watch Dog	Yes
	Working temperature	0°C ~ +45°C
	Working humidity	10% ~ 90%
	Storage temperature	-20°C ~ +60°C



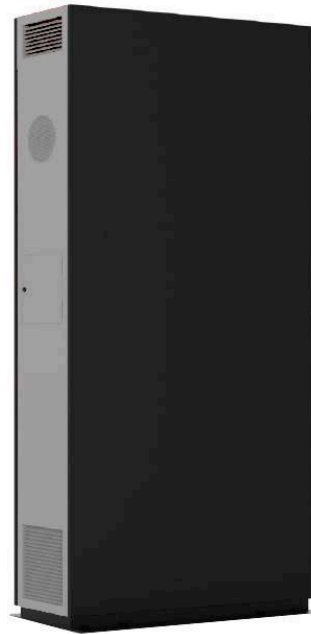
CDX55USA

SMART OUTDOOR SIGNAGE

OUTDOOR SERIES

Community message board
Run advertising
Maps & information
Weather widgets
Broadcast public alerts
& warnings





CDX55USA

FEATURES

- Power Detection
- Brightness Detection
- Temperature Detection
- Humidity Detection
- Water Immersion
- Smoke Detection
- Access Control
- Shock / Motion Detection
- Fan Detection

CDX55USA

SYSTEM	Main IC Model	Hi3751 V600
	CPU	Quad Core A53 CPU
	GPU	Hexa Core GPU
	Memory	2GB DDR3
	NAND Flash	8GB eMMC Flash
	Android Version	Android 5.1
	Online AD System	Cybercast
	Panel Size	55 inches (140cm) Diagonal
	Panel Native Resolution	3840 x 2160 pixels
	Aspect Ratio	16:9
	Back light	ELED
	Viewing angle (H/V)	178 / 178 degree
	Brightness	2500 cd/m ² (Typ)
	Touch Technology	-
Touch Inputs	-	
Touch Response Speed	-	
Working Life	50000 MTBF (7 x 24 hours)	
DESIGN	Screen Protector	-
	Sound Output (RMS)	2 x 3 W
	Front Colour	Black
	Frame Material	Aluminum Alloy Anodic Anodization Coloring
	Rear Cover Material	High Strength Cold Rolled Plate
	Standard Base	-
	Wall Mount Support	-
	Anti-theft Lock	-
	Base Wheel	-
	HDMI Out	-
INPUT & OUTPUT	HDMI In	1
	Component in (Y/PB/Pr)	-
	PC in (D-sub)	-
	Composite in (AV)	Mini Jack*1
	PC Audio In / DVI Audio in (Mini Jack)	-
	RF In	-
	Line Out	1
	IR Out	-
	RS232	1
	USB 3.0	1
	USB 2.0	1
Card Reader	Micro SD*1	
Ethernet (LAN)	1	
FEATURE	Wireless LAN Built-in	IEEE802.11 b/g/n, 2.4GHz
	Wireless BT Built-in	Optional
	3G/4G Built-in	Optional
	Built-in battery	Real-time clock function
	Timing switch	Built-in single chip to set Standby On/Off
	Watch Dog	Yes
ELECTRICAL	Working temperature	0°C ~ +45°C
	Working humidity	10% ~ 90%
	Storage temperature	-20°C ~ +60°C



CDX65USA

SMART OUTDOOR SIGNAGE

OUTDOOR SERIES

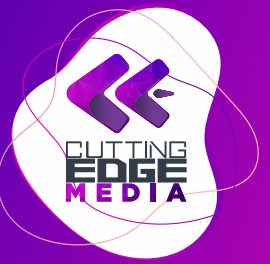


Community message board
Run advertising
Maps & information
Weather widgets
Broadcast public alerts
& warnings



CDX65USA

SYSTEM	Main IC Model	Hi3751 V600
	CPU	Quad Core A53 CPU
	GPU	Hexa Core GPU
	Memory	2GB DDR3
	NAND Flash	8GB eMMC Flash
	Android Version	Android 5.1
	Online AD System	Cybercast
	Panel Size	65 inches (165cm) Diagonal
	Panel Native Resolution	3840 x 2160 pixels
	Aspect Ratio	16:9
	Back light	ELED
	Viewing angle (H/V)	178 / 178 degree
	Brightness	2500 cd/m ² (Typ)
	Touch Technology	-
Touch Inputs	-	
Touch Response Speed	-	
Working Life	50000 MTBF (7 x 24 hours)	
DESIGN	Screen Protector	-
	Sound Output (RMS)	2 x 3 W
	Front Colour	Black
	Frame Material	Aluminum Alloy Anodic Anodization Coloring
	Rear Cover Material	High Strength Cold Rolled Plate
	Standard Base	-
	Wall Mount Support	-
	Anti-theft Lock	-
	Base Wheel	-
	HDMI Out	-
INPUT & OUTPUT	HDMI In	1
	Component in (Y/PB/Pr)	-
	PC in (D-sub)	-
	Composite in (AV)	Mini Jack*1
	PC Audio In / DVI Audio in (Mini Jack)	-
	RF In	-
	Line Out	1
	IR Out	-
	RS232	1
	USB 3.0	1
	USB 2.0	1
	Card Reader	Micro SD*1
FEATURE	Ethernet (LAN)	1
	Wireless LAN Built-in	IEEE802.11 b/g/n, 2.4GHz
	Wireless BT Built-in	Optional
	3G/4G Built-in	Optional
	Built-in battery	Real-time clock function
	Timing switch	Built-in single chip to set Standby On/Off
ELECTRICAL	Watch Dog	Yes
	Working temperature	0°C ~ +45°C
	Working humidity	10% ~ 90%
	Storage temperature	-20°C ~ +60°C



The Big Summer Sale
Glenbrook
\$799 \$999

A vertical digital display showing a mobile website for Focus Furniture. The browser address bar shows 'https://www.focusfurniture.com.au'. The page content includes:

- Catalogue & TV promo with a 'VIEW NOW' button.
- A 'JOIN OUR VIP CLUB TODAY!' section with subtext: 'Join up today and get the inside scoop on all the latest promotions, exclusive VIP discounts plus much more!'.
- An 'In-store gift vouchers available online.' section with subtext: 'Order that perfect gift with the click of a button.' and a 'BUY NOW' button.
- A 'FIND YOUR NEAREST STORE' section with a location pin icon and a 'CLICK HERE' button.
- A 'PROUD PARTNERS WITH BCNA.' section with subtext: 'Read more about our established partnership with Breast Cancer Network Australia.'

WARWICK
www.warwick.com.au





135 St Vincent Street. Nelson

Talk to Joolz

022 657 2341

Email

joolz@cutedge.co.nz

Website

www.CuttingEdgeMedia.nz